



Data Sheet

Product Code: XS2B

Product Description: 2-Gang 10A 1- or 2-Way Rocker Switch

Range: Classic

Finish: Matt Chrome

Product Category: 2-Way Rocker Switch

Insert/Knob Colour: Black Rockers

Barcode: 5021575830118

Dimensions: 86x86x25mm

Faceplate Depth: 7mm

Product Weight: 130g

Fixing Centres: 60.3mm

Recommended Back Box Depth: 16mm

Operating Voltage: 220/250V AC

Maximum Load Rating: 10A

Maximum Current Rating: 10A

Terminal (Live) Diameter: 3.3mm; **Capacity:** 3 x 1.5mm²

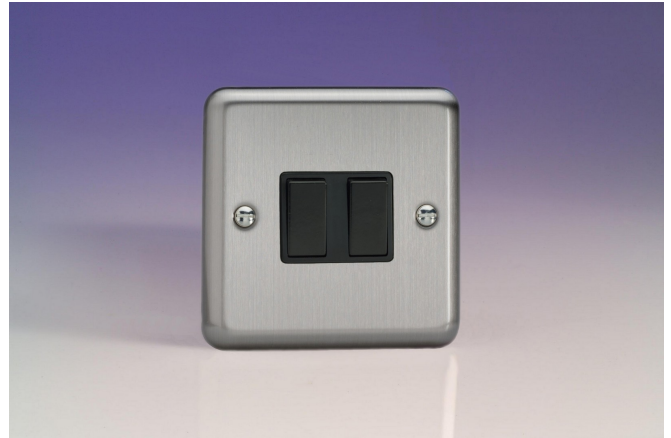
Terminal (Earth) Diameter: 3.3mm; **Capacity:** 3 x 1.5mm²

Intended Applications: Indoor Use Only. Domestic lighting circuits.

Safety Advice: Product Must Be Earthed.

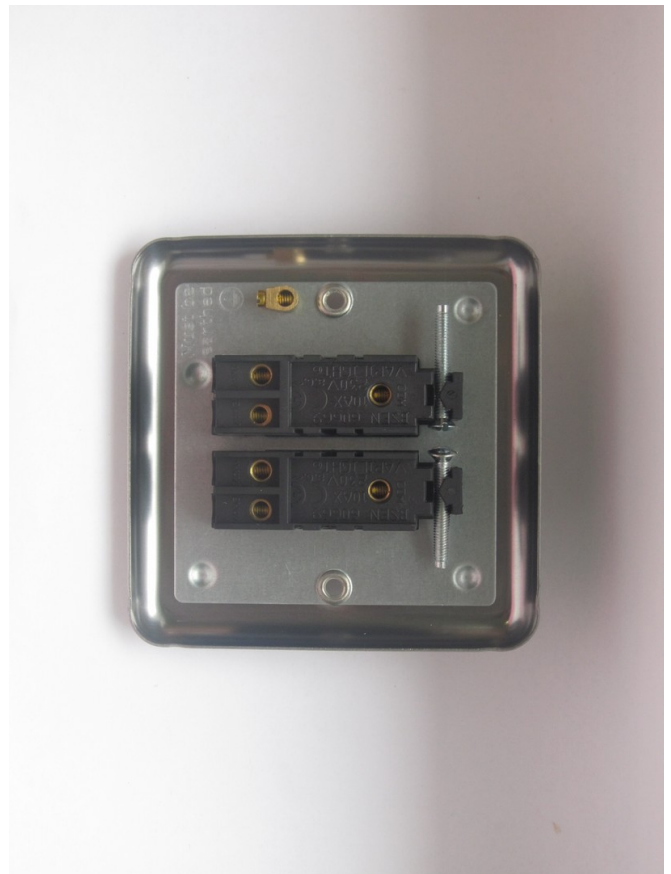
Applicable Safety Standard: BS EN 60669-1

Commodity Code: 85365007



Product Features

- ⊙ 1- or 2-way switching
- ⊙ Suitable for controlling both mains and low voltage lighting
- ⊙ Curved edge faceplate



10 YEAR GUARANTEE

BRITISH MADE 